

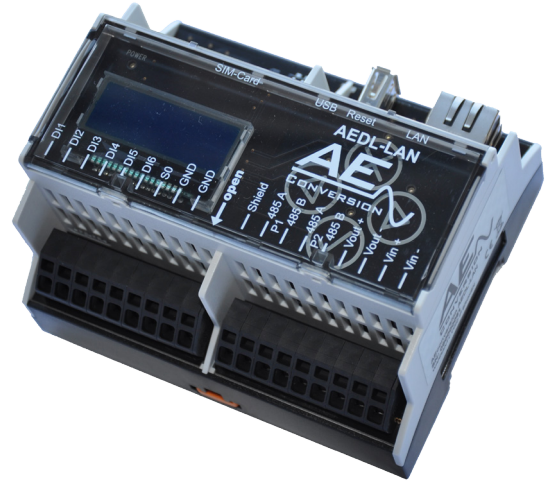
AEDL-LAN

LAN Data Logger

LAN Data Logger for Monitoring

The AEconversion data logger can collect and store measured values of external transducers via three RS485 interfaces. Furthermore, the data logger has an Ethernet interface for configuration via the embedded Web server and a USB interface for data backup, storage expansion and connection of sensors or extensions.

For easy configuration and display of current readings, a LC display and four capacitive buttons are used.

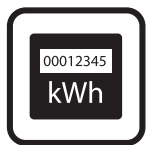


Produktdetails

- Storage: data storage 1GB (optional 2 ... 4GB)
- Measurement storage rate: 1 seconds - 24 hours
- Operating voltage: 10 ... 36 V_{DC} external
- Power consumption: ca. 1W without extension module (LC- display and Ethernet interface deactivated)
- Operating temperature: - 20 ... 70 °C
- Humidity: 0 ... 70 %, non condensing



Utility Grid



Meter



Household



PC Software

Ethernet



AEDL-LAN

RS485

RS485

RS485



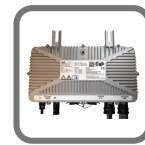
AEC Gateway



Micro-Inverter



PV-System



Micro-Inverter



PV-System

Gehäuse

- Display: LC- display 128 x 32 pixel
- Housing material: plastic
- Protection Degree: IP 20 acc. to DIN 40 050-9/5.93
- Weight: 300 g
- Dimensions (L/W/H): 107 x 90 x 60 mm

Interfaces

- 3x RS-485
- 1x Ethernet
- 8x digital Inputs
- 1x USB- Host

In connection with a gateway or when connected to a RS485 inverter, the AEDL-LAN datalogger stores the data of the PV system. Through Ethernet, the data can be accessed via a built-in web server.